

SPECIFICATIONS

- 31 Color options
- Ultra high strength concrete
- Concrete basin sink
- Integral color
- Stain and scratch resistant
- Support structure needed to accommodate weight.
- Requires a vessel style faucet or a wall mount faucet
- No overflow
- Easy installation

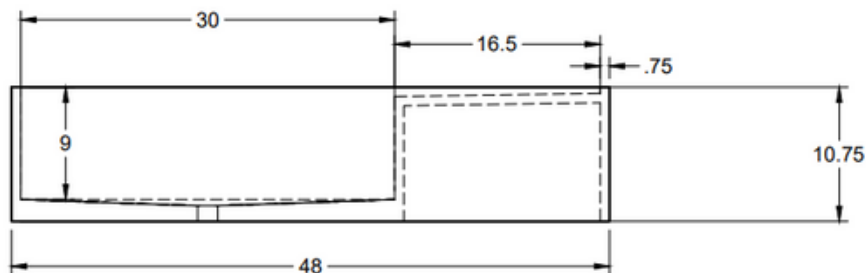
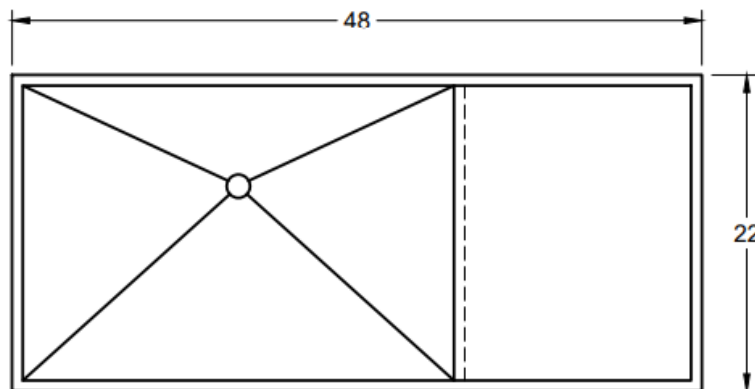
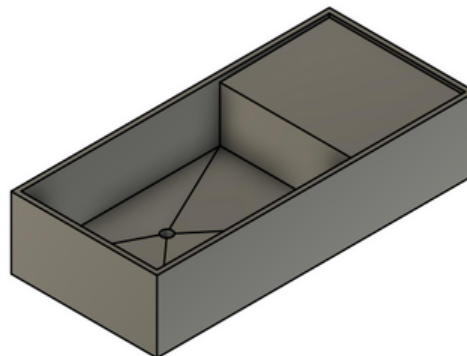
- Care info on website faq

Material UPHC Concrete

Weight 200lbs/90.72 kg

Dimensions 22"x48"xH10.75"

Drain Size 1 1/4" to 1 1/2"



Warranty

12 month manufacture defect warranty

Replacement with the return of the original item. Contact the place of purchase first for warranty questions. crete collective guarantees its products against any manufacturing defect under normal conditions of use and maintenance. The warranty may vary depending on the type of product. crete will proceed at its discretion to repair or replacement of parts, or products found to be defective for normal use for which they were designed. crete is not responsible for any labor costs or any other costs related to the installation of a product, its repair or replacement as well as for any damage or incident, expense, direct loss or indirect.

* All dimensions are in inches or millimetres and may vary from $\pm 1/4"$ (6 mm). Illustrations are not drawn to scale. Dimensions may vary. These dimensions may be changed at the discretion of the manufacturer. No responsibility is assumed.