



please **carefully** read instructions
prior to install to avoid
any damage from incorrect
installation or mishandling

remember:

wait 24 hours
for silicone to
dry before
using water

do not
overtighten
drain. hand
tightening no
more than a 1/8"
turn.

do not place
tools &
hardware near
sink during
install

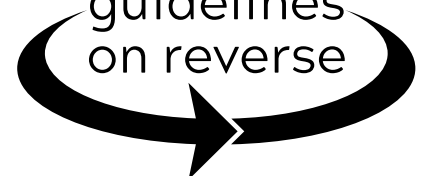


**crete
collective**

Phone
Email
Web

1-(877) 430-5551
hello@cretecollective.com
cretecollective.com

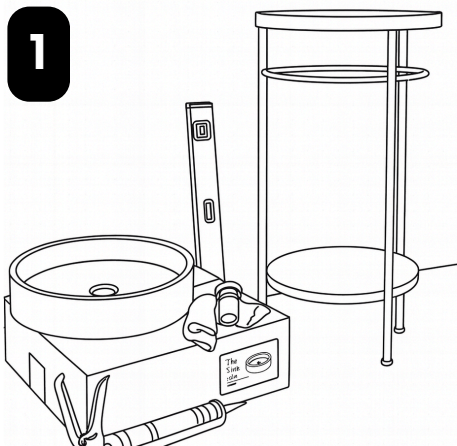
installation
guidelines
on reverse



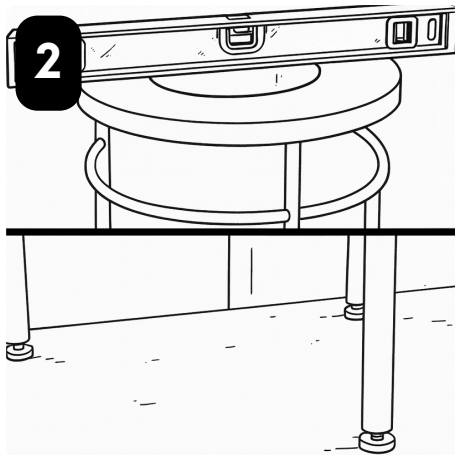
THANK YOU FOR CHOOSING A CRETE COLLECTIVE PRODUCT FOR YOUR SPACE.

THIS DOCUMENT PROVIDES YOU WITH COMPREHENSIVE GUIDE TO ENSURE THE INSTALLATION OF YOUR NEW PRODUCT IS AS SMOOTH AND STRAIGHTFORWARD AS POSSIBLE.

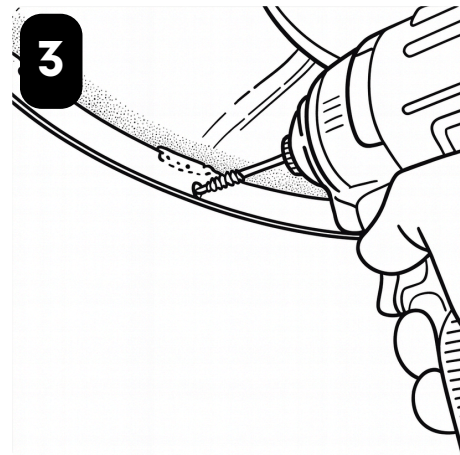
BELOW YOU'LL FIND STEP BY STEP INSTRUCTIONS TO ENSURE A SUCCESSFUL INSTALLATION. WHILE YOU CAN EASILY INSTALL THIS NEW SINK YOURSELF, CRETE SUGGESTS ALWAYS HIRING A TRAINED PROFESSIONAL FOR INSTALLATION TO MITIGATE ANY POTENTIAL ISSUES. CRETE COLLECTIVE CANNOT BE HELD LIABLE FOR ANY DAMAGES OR INJURY ARISING FROM IMPROPER INSTALLATION OF THE SINK. IT IS CRUCIAL TO FOLLOW THE PROVIDED INSTRUCTIONS CAREFULLY AND REFRAIN FROM OVERTIGHTENING THE SINK DURING INSTALLATION.



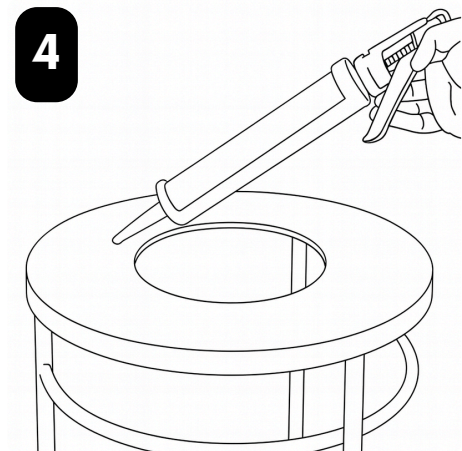
1 REMOVE SINK AND CONSOLE FROM BOX AND PUT IN INTENDED SPACE. GATHER GLOVES, SILICONE/PLUMBERS PUTTY, LEVEL, AND DRAIN ASSEMBLY



2 PLACE LEVEL ON TOP OF CONSOLE. SET FEET SO THE UNIT IS LEVEL, AND BACK IS FLUSH AGAINST THE WALL.



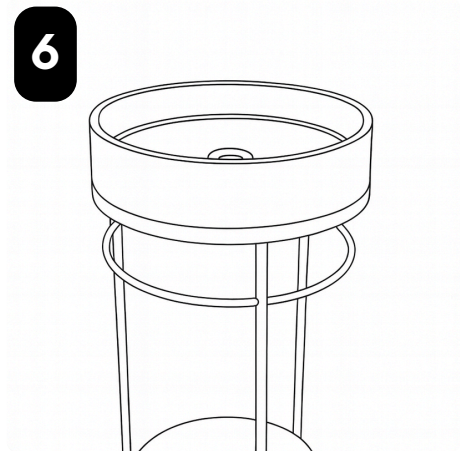
3 SECURE UNIT TO WALL THROUGH MOUNTING HOLE(S) UNDERNEATH TOP OF UNIT.



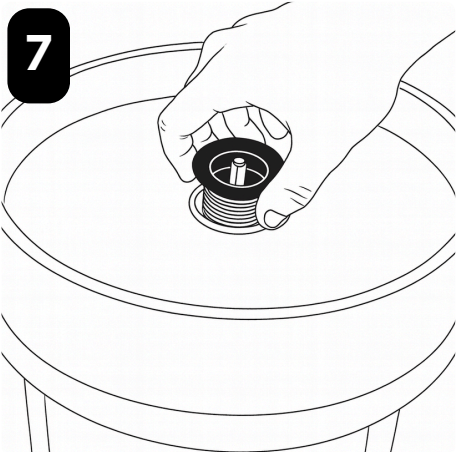
4 RUN A BEAD OF CLEAR BATHROOM SILICONE TO TOP OF CONSOLE. THEN ALIGN SINK TO SIT EVENLY ON TOP AND SECURE THE BASIN TO CONSOLE



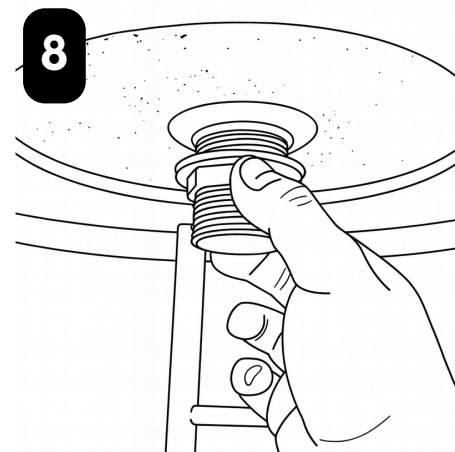
5 RUN SILICONE AROUND SINK SEALING IT TO CONSOLE. SMOOTH SILICONE OFF TO NEAT FINISH AND WIPE CLEAN EXCESS WITH CLOTH



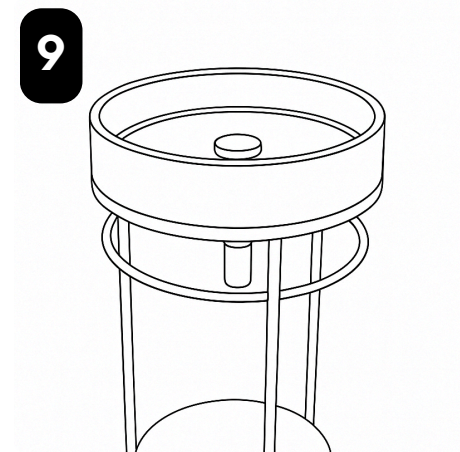
6 PLEASE ENSURE THE SILICONE IS WATERPROOF AND COMPLETE, SO WATER CAN'T GET UNDER THE BASIN



7 FILL DRAIN AREA WITH PLUMBERS PUTTY OR SILICONE, SURROUNDING DRAIN RIM



8 SLIDE DRAIN INTO PLACE, HAND-TIGHTEN. DO NOT OVER TIGHTEN



9 REMOVE EXCESS PUTTY, ALLOW SILICONE TO DRY FOR 24 HOURS BEFORE USE